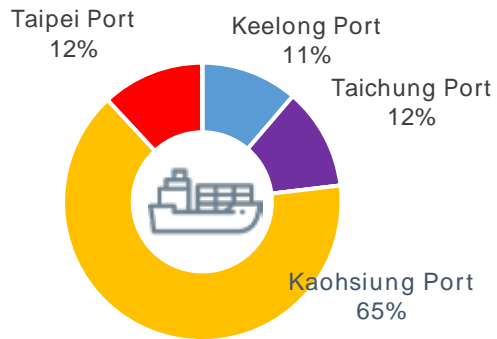


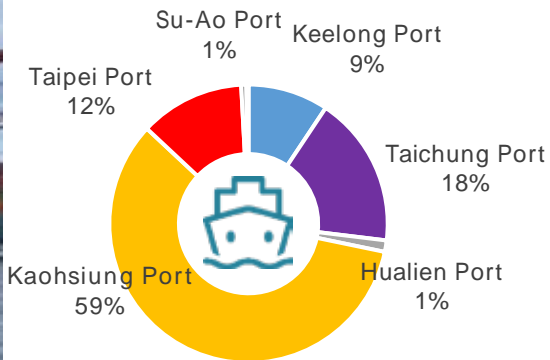


# Port of Kaohsiung

# Achievements of Port KHH



2023  
**Container handled in ports of Taiwan**  
 Ports in Taiwan 13,596,979 TEU  
 Kaohsiung Port 8,833,830 TEU

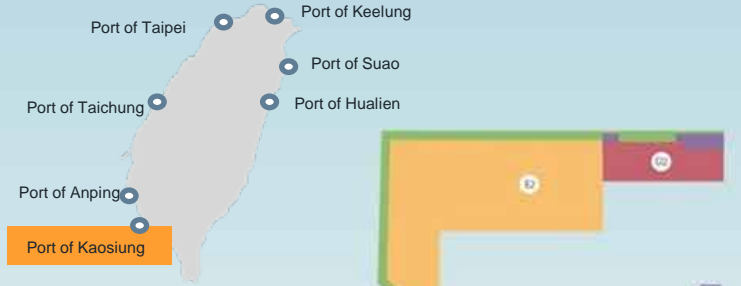


2023  
**Volume of loading and discharging**  
 Ports in Taiwan 666,328,840 tons  
 Kaohsiung Port 391,236,429 tons

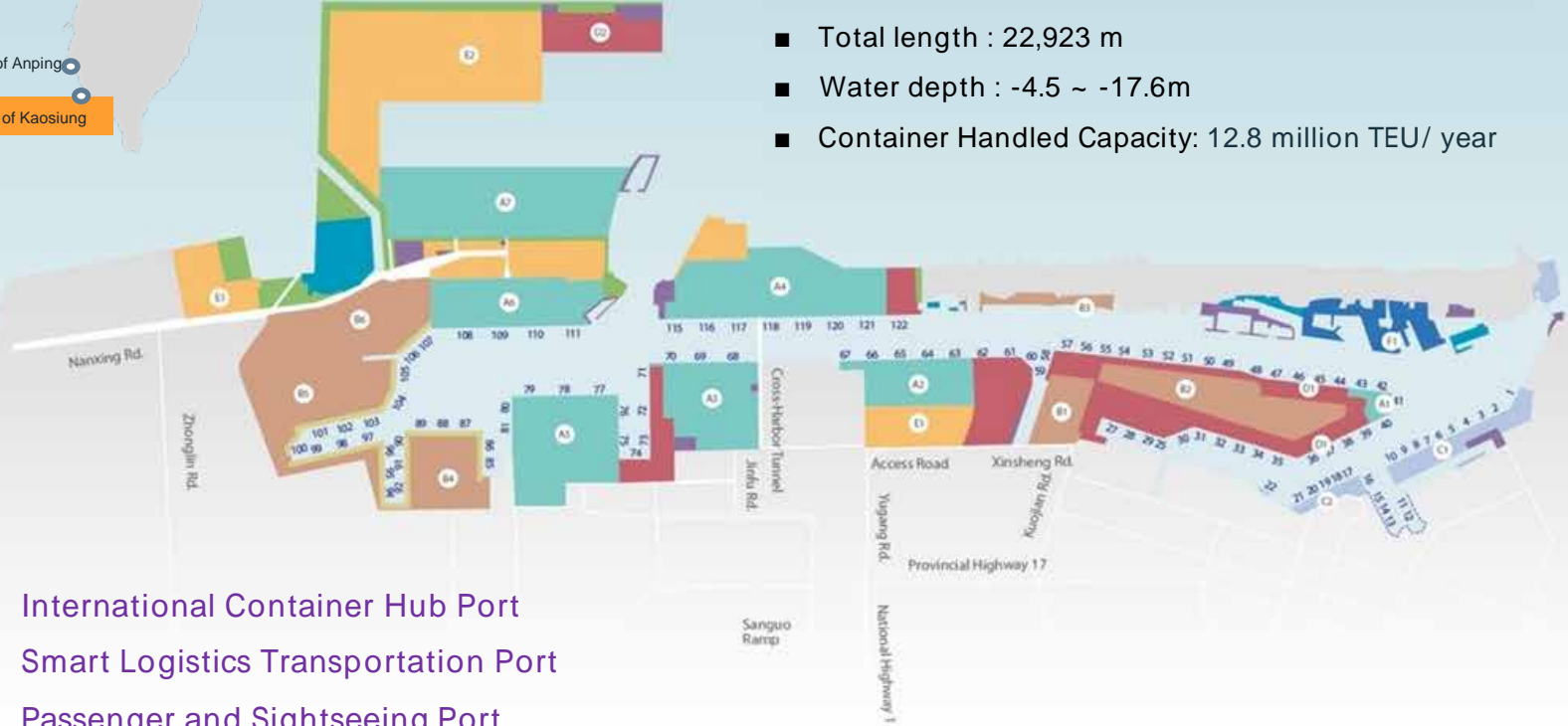


2024  
**Cruise & Passenger statistic**  
 Voyage 65 Pax 93,901  
 Turnaround 30  
 Port of call 35  
 Maiden Voyage 6

# Port Facility and Positioning of Kaohsiung Port



- Port area : 17.74 Hectare (land: 1.87 hectares ; Water: 15.87 hectares)
- Operating docks : 95
- Container Terminals : 26
- Total length : 22,923 m
- Water depth : -4.5 ~ -17.6m
- Container Handled Capacity: 12.8 million TEU/ year



- ✓ International Container Hub Port
- ✓ Smart Logistics Transportation Port
- ✓ Passenger and Sightseeing Port

# Intercontinental Container Terminal (ICT) Project Phase 2 & Container Terminal No.7 at Kaohsiung Port



petrochemical oil storage and transport center

Bulk/General Cargo Terminal

Container Terminal No. 7

Container Terminal No.7

- Terminal number : S1~S5
- Container yard area : 149ha
- Pier Length : 2,415m
- Pier depth : -18m

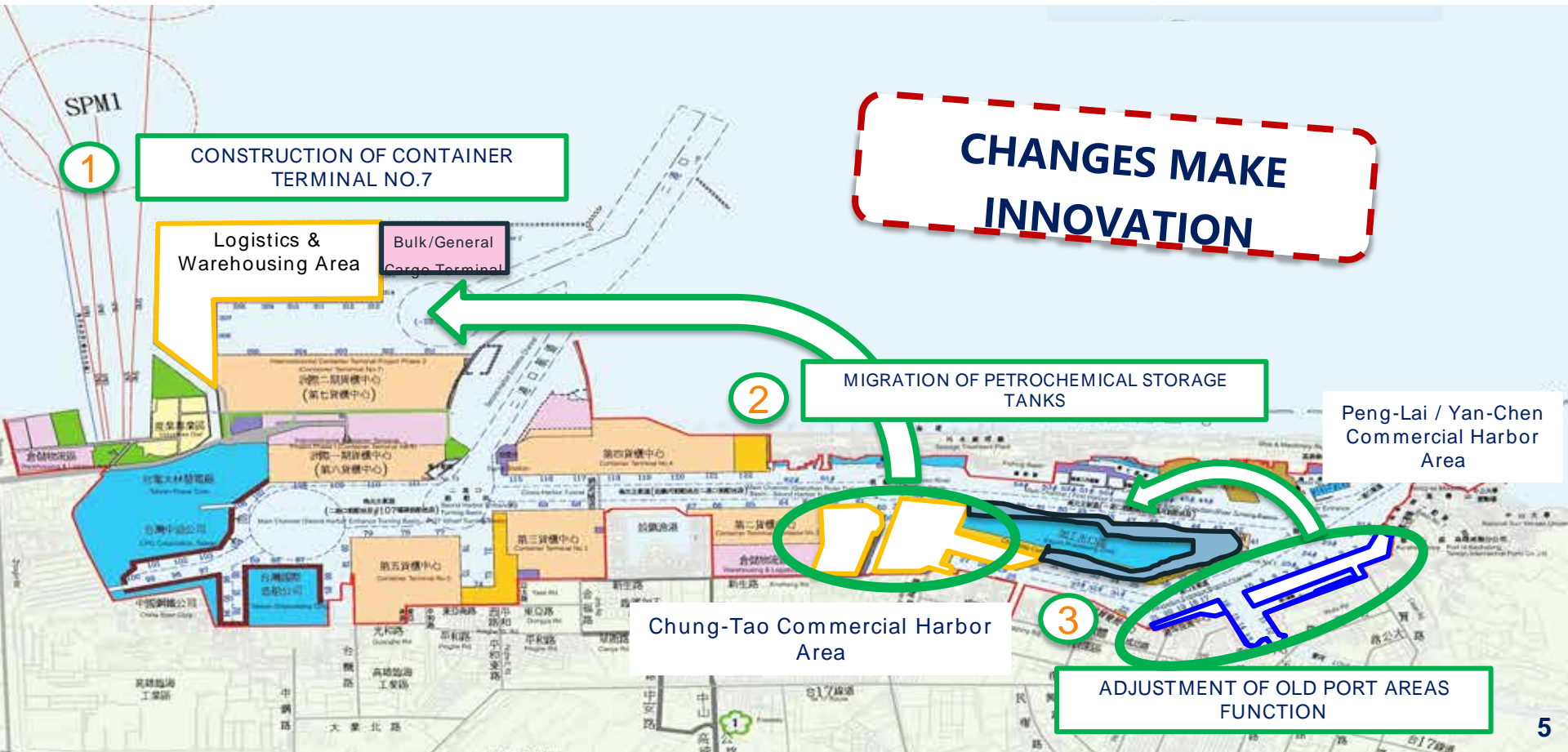
Maximum vessel size: 24,000-TEU class

Designed Capacity: 4.5M TEU / year

Automated container terminal

Container Terminal No.6

# Adjustment of Kaohsiung port areas function



# Cruise Ship Tourism

## Equipment

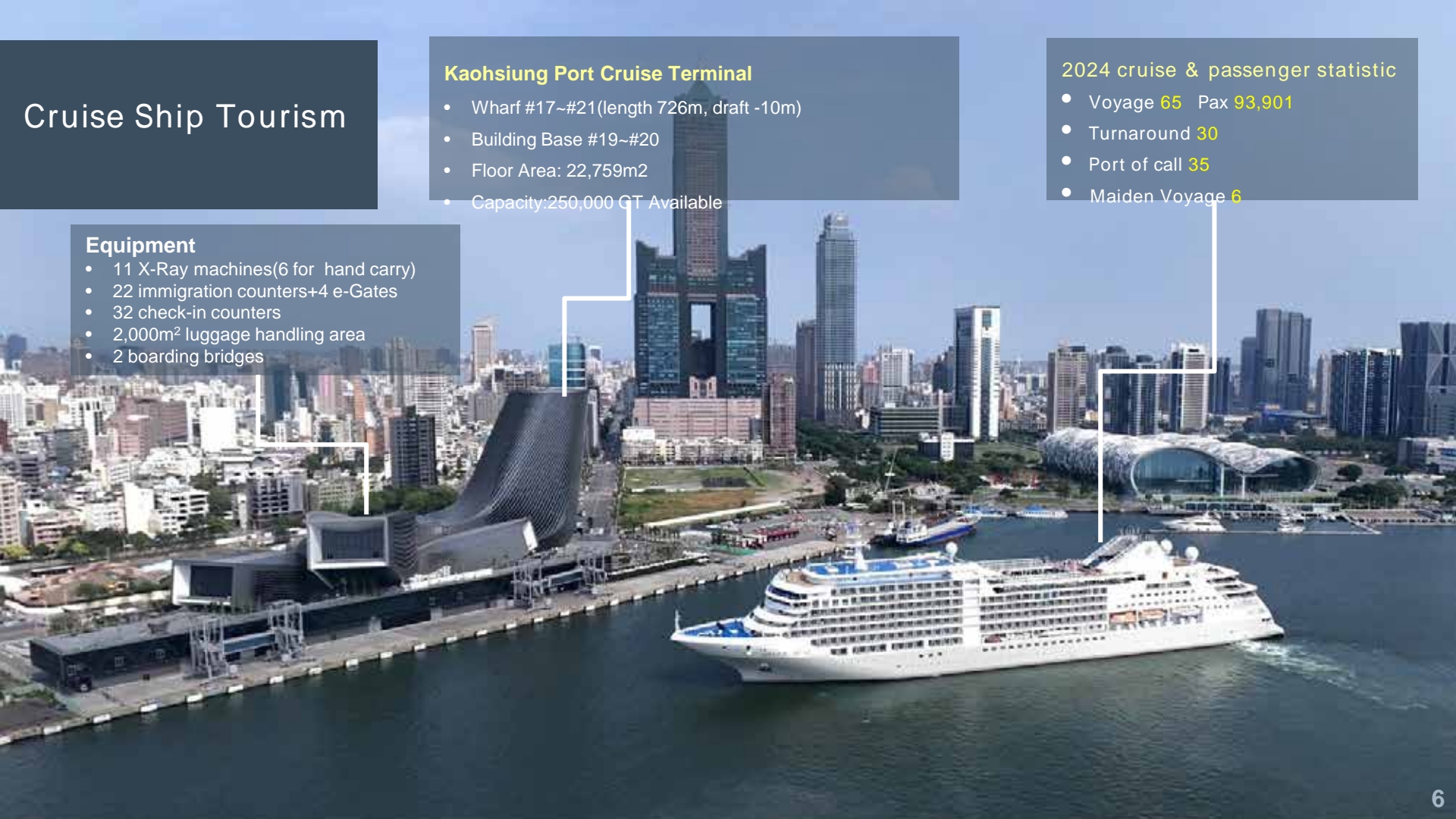
- 11 X-Ray machines(6 for hand carry)
- 22 immigration counters+4 e-Gates
- 32 check-in counters
- 2,000m<sup>2</sup> luggage handling area
- 2 boarding bridges

## Kaohsiung Port Cruise Terminal

- Wharf #17~#21(length 726m, draft -10m)
- Building Base #19~#20
- Floor Area: 22,759m<sup>2</sup>
- Capacity:250,000 GT Available

## 2024 cruise & passenger statistic

- Voyage **65** Pax **93,901**
- Turnaround **30**
- Port of call **35**
- Maiden Voyage **6**





# New vision of Symbiosis between Port and City - Tourist Port

Redevelopment  
of Old Port Area



KW2



Peng-Lai Commercial Port Area



Great Harbor Bridge



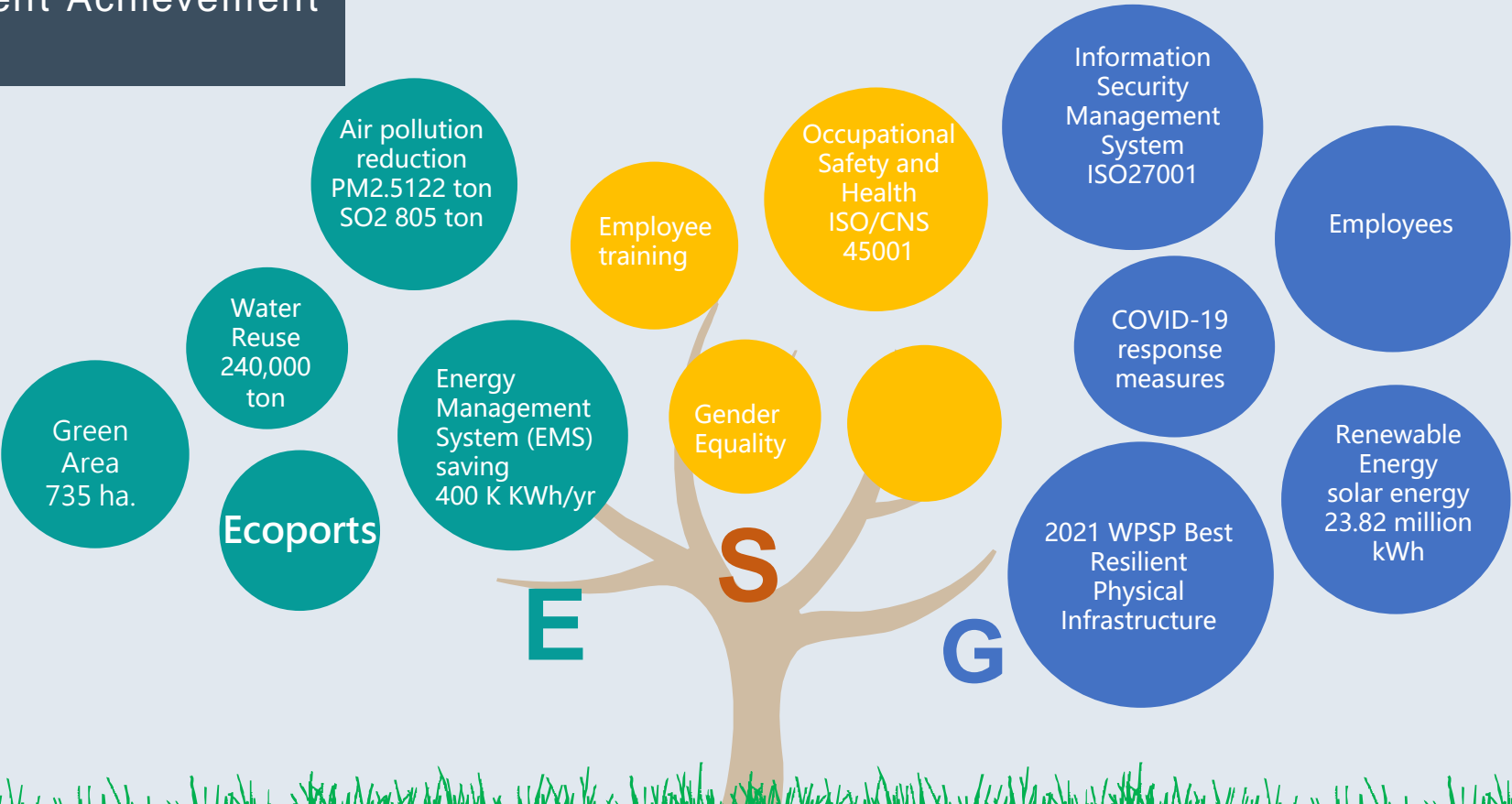
Echo Across The Harbor



HOLO Park



# Current Achievement





# Future Energy Development of Kaohsiung Port



- In the future, TIPC will collaborate with CPC Corporation to construct two LNG wharves, two crude oil wharves, an LNG receiving station, and the outer seawall.
- The reclaimed area (approximately 508 hectares) will serve as a hub for the development of emerging energy sources, such as hydrogen energy.

Thank You!

