
Coastal Intelligence for Safe, Climate Resilient, and Secure Ports

Company Overview



- § Real-time and predictive coastal intelligence
- § Marine safety and climate resilience
- § Offices in Canada and US
- § 8 years in operation
- § 29 Employees



Our sensor nodes

- § Real-time meteorological, wind, wave, 360 cameras, vessel wake detection
- § Self-contained, rapid-deploy, easy exchange
- § Measured multiple hurricanes and the World's most extreme rogue wave





We bolt them onto anything

- § Land stations, pilings, buildings, trees...
- § Our own private buoys
- § 3rd party owned navigation buoys



Our network

- § Currently >50 nodes across North America
- § In port and terminal approaches



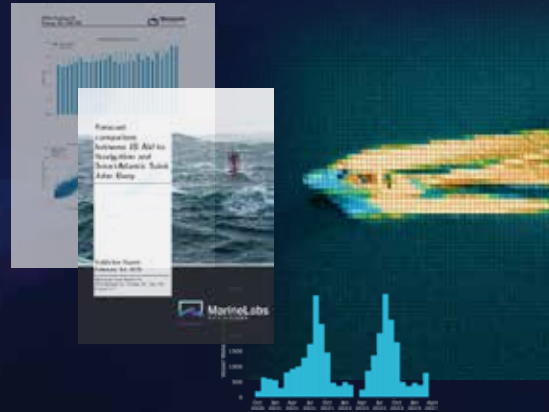
Products

CoastAware



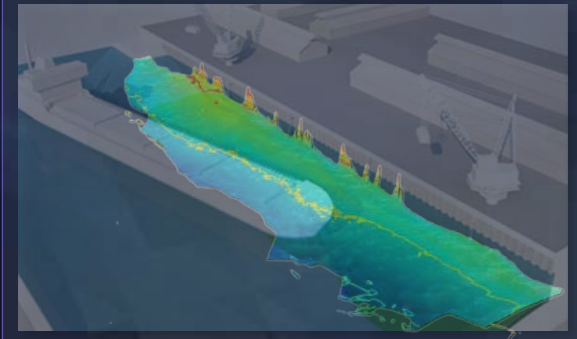
- § Real-time weather + BuoyCams
- § Forecast AI
- § Browser, Phone, Operations Centre, Custom alerts

CoastInsights



- § Wind/Wave climate data for port & terminal
- § Vessel wake detect and report

BerthWatch



- § Vessel berth depth change detection in real-time
- § Prevents groundings, minimizes dredge costs

Thank you!

scott.beatty@marinelabs.io